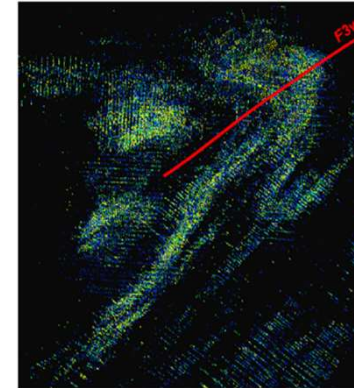


## Figure 17: Comparison of the Footprint of K4 South and 13 Moz Wassa

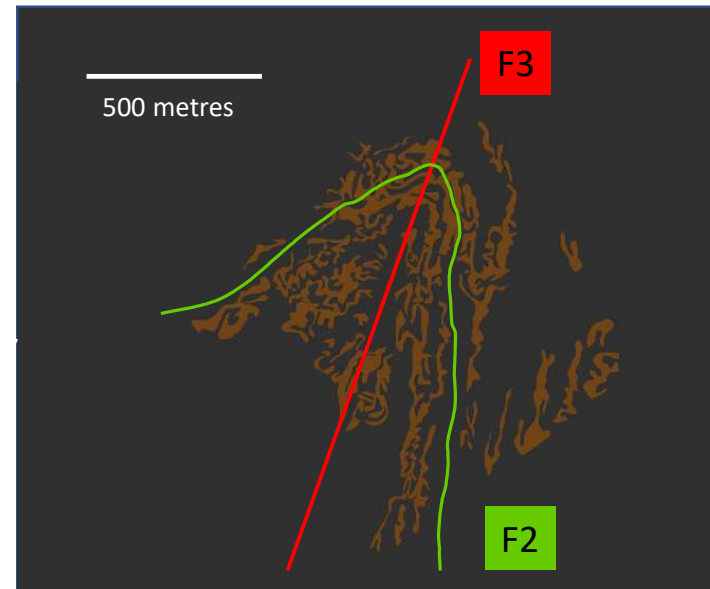
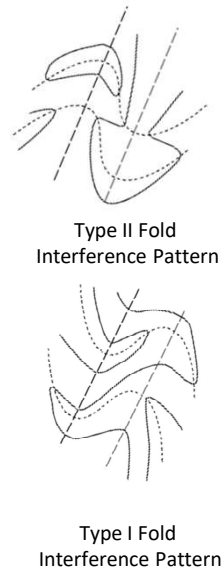
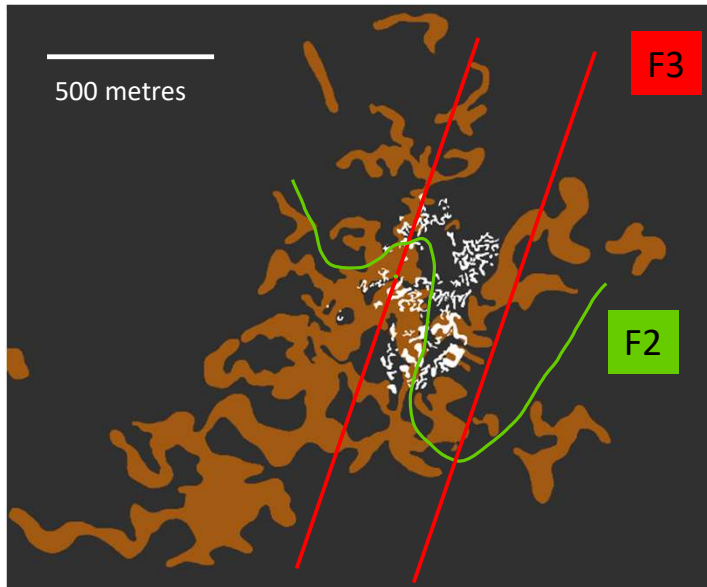
Both gold systems show similar poly-folded forms and similar scale which needless to say is highly encouraging for the potential of K4 South as Wassa's known endowment is 13 million ounces. Differences between the two gold systems can be accounted for by:

- K4 South outline based on much coarser sampling which could lead to aliasing and inaccurate tracing of mineralization. This is demonstrated by the differences in fine detail of artisanal workings and auger outline.
- Differences in the F2 fold style and interference with F3 folds at the two deposits. K4 South as shown by magnetics tends towards a type II fold interference pattern and Wassa a type III interference pattern.



### Wassa Source Data

Showing all drill assays up until 2015 from 5-10m spaced resource and grade control drilling. Blue dots: values >0.5g/t Au  
Yellow: > 3g/t Au  
Source: Perouty, S *et al.* (2015)



**K4 South:** Showing >100ppb Au Auger contour (orange) & Artisanal saprolite workings (white)

**Wassa:** showing solid outlines of > 0.5g/t mineralization (orange) and rotated such that Wassa's F3 axis is striking NNE and in same orientation as K4 South's.